



Getting Started ESP9000



Welcome Getting Started

Congratulations on the purchase of your TOYOTA Pantograms Embroidery System. You are now part of a multi-million dollar industry. We prepared this Getting Started packet to guide you through the setup process of your new machine, with a quick tutorial of installing and using the software. This is just to get you started. It is important that you attend our Embroidery Academy training where you will get more in-depth knowledge about the embroidery business, embroidery machine and software. If you haven't already scheduled an appointment for academy training, please call our office at 1-800-872-1555 to schedule a date convenient for you.

GETTING STARTED

- DVD/VHS Instructional Video
- Service and Support
- Unpacking Your TOYOTA ESP9000 Embroidery Machine
- Setting Up Your TOYOTA ESP9000 Embroidery Machine
- Test Sew Cap
- Removing Cap Driver
- Attaching Tubular Hoop Holder for Tubular Hoop
- Hooping with Tubular Hoop
- Installing the Designer Series Embroidery Software

COMMUNICATION

- Connecting Communication Cables
- Configuring Communication
- Preparing Design for Embroidery Machine
- Calling Design from Embroidery Machine
- Tracing the Design
- Stitching the Design

ADVANCE SETUP

- Expert Stitch Manager
- Disk Reader

GETTING STARTED

DVD/VHS Instructional Video

This instructional video is designed to help you unpack and set up your embroidery machine in an easy to understand format. Prior to unpacking the two pallets for your embroidery machine, we recommend you watch the video to familiarize yourself with the assembling of the machine.

Service and Support

The Service and Support department is ready to assist you should questions or problems arise. We strive to give the best support in the embroidery industry by offering website and telephone support.

For **Website Support** visit www.pantograms.com and click on **Support**.

For **Telephone Support**

Monday – Friday, 8:00am – 5:00pm (EST)

1-800-872-1555 ext. 226

For **Emergency Support** Weekends – Saturday, 10am – 2pm (EST)

1-888-920-9957 for **Machines**

1-888-861-5165 for **Software**

Leave a message with your **name, phone number** and **message** stating the nature of your call and one of our technicians will call you back. Depending on the volumes of calls, your call will be returned within two hours.

Pantograms website

Visit our website at www.pantograms.com for more information about our products, machine support and embroidery support.

To order embroidery supplies visit our embroidery supply website at www.embsupplies.com.

Unpacking Your TOYOTA ESP9000 Embroidery Machine

1st Pallet – Contents of box containing the workstation

- Workstation
- Disk reader
- Owner’s manual
- 2 hoops
- Blank cap
- Other accessories you ordered.
- Hardware for mounting embroidery machine
- Cap option
- Tubular hoop holders
- Tool kit
- Sample test design
- Starter Kit

2nd Pallet – Contents of Crate containing the embroidery machine

- Embroidery machine
- Thread stand rods
- Power Supply box containing power supply, power supply cable, and TOYOTA data cable
- Thread stand
- Tabletop

Tools Needed to Unpack

- One 10mm wrench or ratchet (recommended)
- One 13mm wrench or ratchet (recommended)

(Do not use a crowbar or hammer to open crate. Save the crate for future shipping when service is needed)

Unpacking the Box containing the Workstation

- Lift up the cardboard box.
- Remove the boxes from inside the workstation.
- The workstation is upside down, turn it right side up.

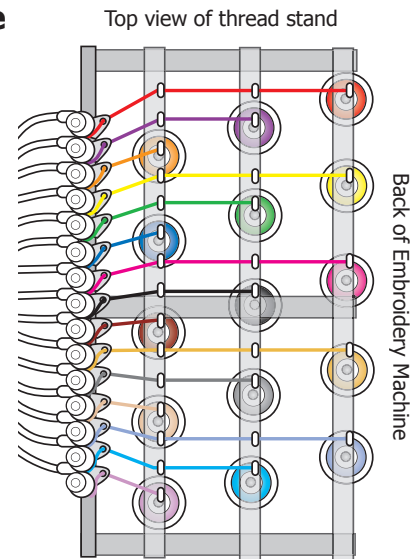
Unpacking the Crate containing the TOYOTA ESP9000

- Remove the six 10mm screws from the base of the crate (3 on one side, 3 on the other) using an electric screwdriver or a socket and ratchet.
- Two people should be able to lift the crate off to access the machine.
- Remove the plastic cover.
- Remove the rope that will release the power supply box and tabletop.
- In the front of the machine at the base remove two 13mm screws that will allow you to remove the machine from the bottom of the crate.
- Two people can now lift up the machine at its base and place it on the workstation or working area.
- If you purchased a workstation, mount the embroidery machine to the workstation (which is recommended because it makes the machine more stable and reduces vibration), by carefully lifting one side of the machine at its base and removing the legs. Repeat this process on the other side. There is a bag of bolts inside the box that came with the workstation. Locate the matching holes on the workstation; this is where the bolts will be placed to secure the machine. Begin by inserting the bolt under the shelf up through the hole and into the machine then tighten with a wrench.

Setting Up Your TOYOTA ESP9000 embroidery machine

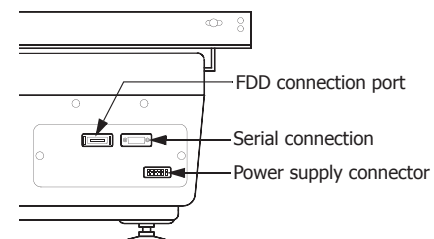
Assembling the Thread Stand

- Cut the plastic wrap around the thread and upper stand.
- Remove the cardboard packaging.
- Install the two support shafts by screwing them into the top of the thread stand. Tighten the shaft with an adjustable wrench.
- In your tool kit, you will find two allen wrenches, use them to remove the screws on the top of the shafts.
- Secure the thread rack to the top of each shaft.
- Once in place make sure the threads are going straight up to their respective guides.
- Carefully check each cone for loose coils of thread that might be caught under the cone.
- Do **NOT** change adjustments or thread tensions.



Power Supply Box

- Open the power supply box.
- Take out the power supply and locate the power cord. (Also contains TOYOTA data cable to be used later for direct communication, see COMMUNICATION)
- Plug one end of the power cord into the power supply and the other into a surge protector.
- Take the DC cable and plug it into the power supply and the back of the embroidery machine. (Both ends of the cable are the same)
- Place the power supply conveniently on the workstation.

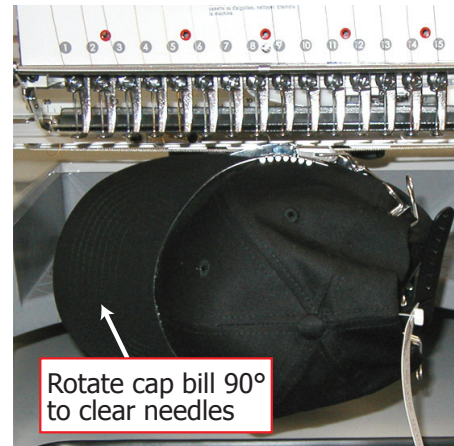
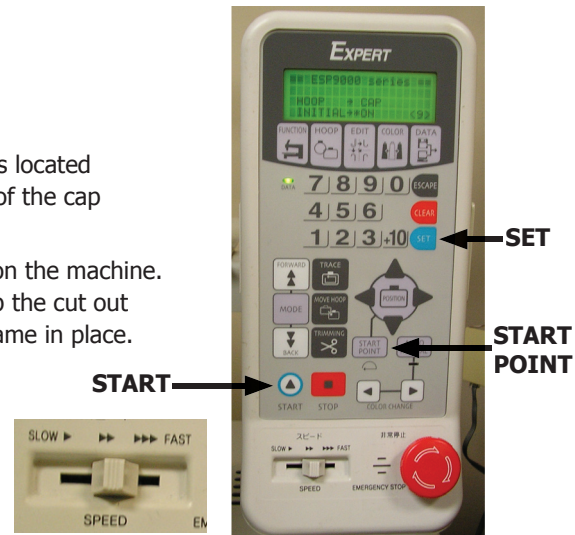


Stabilizing the Machine

- Lower the stabilizer feet on the bottom of the workstation by turning the screws. Each stabilizer foot should be lowered enough to remove the weight from the caster. These feet may also be used to level the machine.

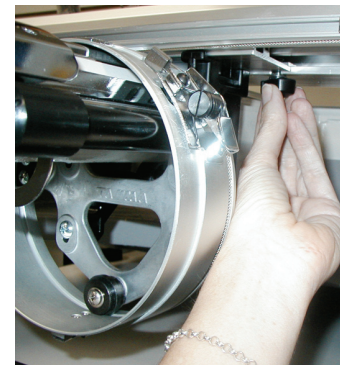
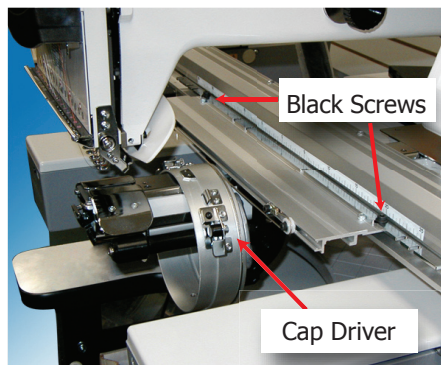
Test Sew Cap

- From the **power supply**, turn **ON** the TOYOTA ESP9000.
- Press **SET** button to initialize machine. Press **START POINT**.
- Remove the sewn cap from the machine. Press the two clamps located on either side of cap to release the cap frame. Rotate the bill of the cap 90 degrees to clear the needle bar and slide the cap off.
- Take the blank cap that is attached to a cap frame and put it on the machine. To load the cap frame, rotate the bill again 90 degrees, line up the cut out notch on the frame to the notch of the cap driver. Snap the frame in place. Make sure it snaps in place all around the cylinder.
- Slide the speed bar to the mid point area.
- Press the **START** button.
- Adjust the speed to 800 stitches per minute by sliding speed bar over until "800 rpm" appears on the LCD screen.
- Compare the stitched out design to the original shipped with machine. If your sample does not look like the sample shipped, call 1-800-872-1555 and leave a voice message at extension 226 and a support technician will return your call as soon as possible.



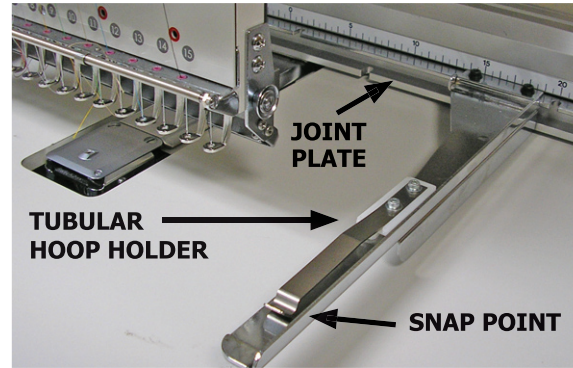
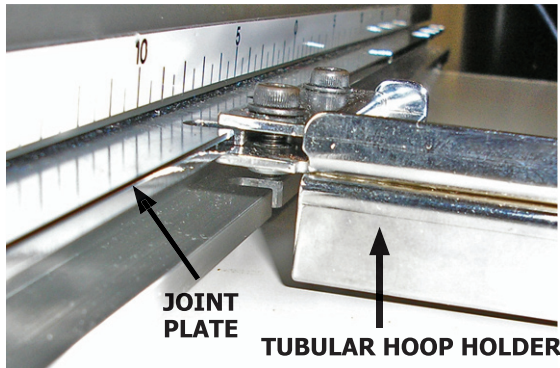
Removing Cap Driver

- Turn **OFF** machine.
- Remove the cap frame like you did in the previous step.
- Take the cap driver off the machine by loosening the two black screws on either ends of the driver with the 4mm allen wrench from the tool kit. Under the cap driver are two black wing nuts that also need to be loosened.



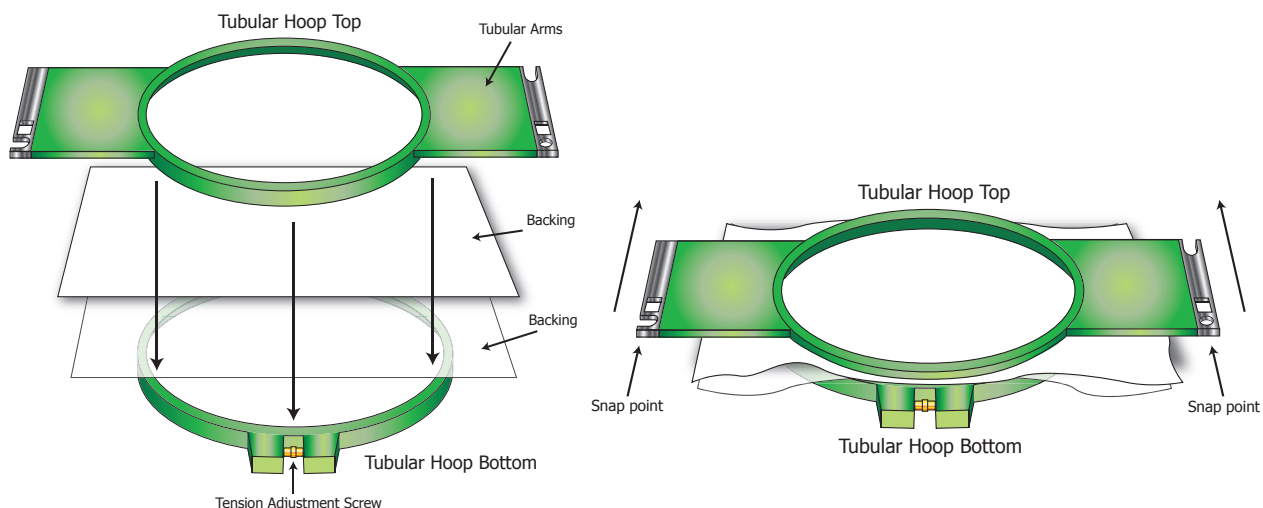
Attaching Tubular Hoop Holder for Tubular Hoop

- Attach the tubular hoop holder to the joint plate by loosening the screws and sliding the screws into the notches in the joint plate. There are 11 notches in the joint plate. Counting from left to right (facing machine), attach the left holder to notches 5 and 6, and the right holder to notches 8 and 9. Tighten the screws.
- Turn **ON** embroidery machine. The LCD control panel will read **CAP**. Use the left or right **ARROW** keys to select **FLAT**. Press **SET**.



Hooping with Tubular Hoop

- Take the 15cm hoop (that came with your starter kit) and separate the two rings, placing the bottom ring on a flat surface with the tension screw towards you.
- Place two pieces of heavy cut-away backing (white material that came in your starter kit) on top of the bottom ring, make sure the material extends beyond the hoop evenly all around.
- Take the tubular hoop top ring and put it on top of the backing material. The double notches on both sides of the arms are towards you. With some force, press down into the bottom hoop. If the bottom ring is too tight, loosen the tension adjustment screw with your fingers on the bottom hoop ring until you are able to push the hoops together. There should be some force applied. The backing material inside the hoop should be smooth and taut.
- Take the hooped material to the embroidery machine and slide the tubular hoop arms into the hoop holder. It will snap in place at the snap points.



Installing the Designer Series Embroidery Software



DO NOT ATTACH THE SECURITY DEVICE TO THE COMPUTER SYSTEM
UNTIL INSTRUCTED TO DO SO!

If you have Windows 2000 or XP installed on your computer as an operating system, you will need to load a device driver prior to installing the Designer Series software. For your convenience, the driver is located on the software installation CD.

1. Insert the **Designer Series software CD** into the CD Rom drive. It will auto run and the initial splash screen will appear with the following choices:

- **Install Rainbow Driver**
- **Install Software**
- **Exit Pantograms CD.**

2. Left click on **Install Rainbow Drivers** and follow the on screen prompts. Choose **Complete Install** and "**Do not modify the Microsoft firewall settings**".

3. The initial splash screen reappears.

4. At this time, attach the **security device** into a USB port, the New Hardware wizard will run, when done click **Finish**.

5. Left click on **Install Software** and follow the on screen instructions. When prompted to install Free Designs, make sure you select **Yes**.

6. The initial splash screen will reappear.

7. Choose **Exit the Pantograms CD**.

Communication

Connecting Communication Cables

- The TOYOTA data cable connects the computer to the TOYOTA ESP9000 machine by using a 9 pin serial female-to-female connections. This cable enables the embroidery software to communicate to the embroidery machine either through the Communication Driver or the Expert Stitch Manager. Plug one end in the serial port on the back of the embroidery machine (*see diagram on page 3*) which is above the power supply cable and the other end in the computer's serial port.
- If your computer does not have a serial port connection, you will need to purchase a USB to Serial Port adapter, available at any retail computer store. The adapter must be installed, configured with the Com port number identified according to manufacturer's instructions.

Configuring Communication

There are **three ways** to communicate to the embroidery machine from the computer – the **Communication Driver**, the **Expert Stitch Manager** or the **Disk Reader**. To get you started we will use the **Communication Driver**. (*see Advance Setup on page 9 for more information on Expert Stitch Manager and Disk Reader*)

Communication Driver

Offers a simple cable connection between computer and embroidery machine where the Com port is selected to communicate.

- If the Communication Driver is not running, double click on the icon to start.
- When the computer is turned on, the Communication Driver pop up window should automatically appear on the desktop.
- The Communication port must be activated prior to sending the job to the machine.
 1. **Double click** the numbered box that correspond to the serial port to which the communication cable is connected. When double clicked, the background of the box turns white and the number turns black.
 2. Shut down the Communications Driver by clicking on **Shut Down** and then **Yes**.
 3. **Restart** the Communication Driver to establish communication between the computer and embroidery machine by double clicking on the Communication Driver shortcut located on the desktop.

Preparing Design for Embroidery Machine

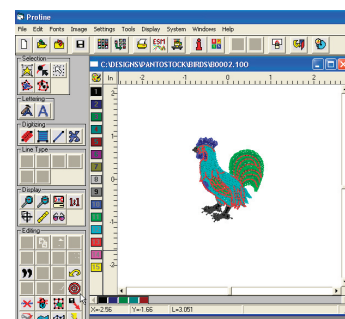
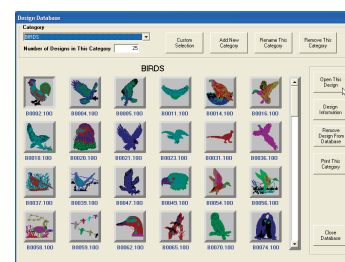
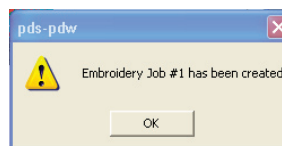
- **Open the Designer Series software** by double clicking on the icon. You should have one of the following five icons: Sew Easy, Editing, Digitizing, Advanced Digitizing or Professional Digitizing.



- Click on the **Design Database** icon located in the top toolbar. The Design Database screen will open with the Birds category showing.
- Click on **B002.100** and then the **Open This Design** button. The design will now appear in the work area.
- Center the design by clicking on the **Center Design** icon located in the Editing section at the bottom left of the screen.



- Click on the **Prepare for Embroidery** icon in the toolbar at the top of the screen. It will ask you if you want to prepare design for embroidery. Click **O.K.** An embroidery job number will appear. Click **O.K.** The job is now ready to be received by the embroidery machine.



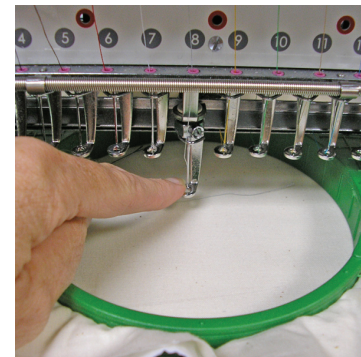
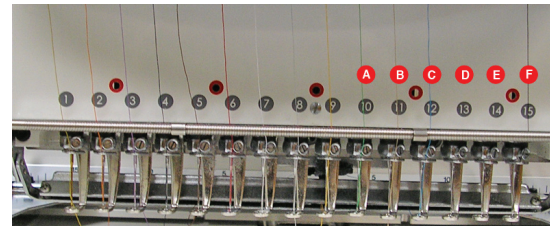
Calling Design from Embroidery Machine

- Press the **START POINT** key. Press the **DATA** key.
- Press the right **ARROW** key to select **PC** and then press **SET**.
- Enter the **job number** (assigned from the Prepare for Embroidery step) on the control panel. A green data light will stop flashing when transfer is completed.
- Enter the **color sequence**. The bottom of the LCD display will read **01/05:** with a black box flashing, enter the following needle numbers on the key pad: 1, 3, 5, 7, and 9. Press **SET**.



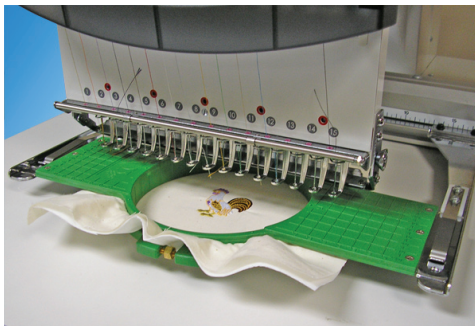
Tracing the Design

- On the LCD display panel there will be a number or letter in the bottom right corner inside < >. This number is the **active needle**. On your TOYOTA ESP9000 the needles are displayed as 1, 2, 3, 4, 5, 6, 7, 8, 9, A, B, C, D, E, and F.
- The first step before you trace is to make sure the **active needle** is **centered** in the hoop. With your finger, push down the active needle's presser foot to see if it is centered, and then release it. If it is not, use the four **ARROW** keys to position the hoop to make it centered.
- Press the **TRACE** key so the pantograph moves around the outside perimeter of the design; follow the active needle's position to make sure the presser foot does not hit any part of the hoop.



Stitching the Design

- Press **START** to stitch the design.
- When the design is done stitching the machine will beep three times. Press the **START POINT** key to reset the machine so it is ready to bring over another design.
- Remove the hoop from the machine by placing your middle fingers under the hoop's arm and your thumbs on top of the outer edge of the silver tubular hoop holder and push up. Notice the hoop arms are released from the clips.



Congratulations! You have embroidered your first design! We hope it was a rewarding experience. You will soon be creating designs, selecting your own thread colors and personalizing beautiful embroidery.

If a **thread break** occurs, the machine will beep telling you of the thread break.

- Press **STOP** to clear the error message.
- Check the thread path. Make sure the thread is not caught on anything.
- Re-thread the needle.
- Press the **BACK** key 3-4 times to back up a few stitches.
- Press the **START** key and the design will begin stitching.

ADVANCE SETUP

The Expert Stitch Manager and Disk Reader will be covered in greater detail when you attend the Embroidery Academy.

Expert Stitch Manager

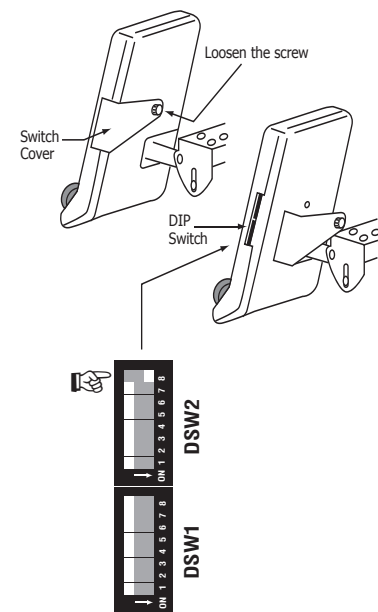
Expert Stitch Manager is specially developed software that allows you to communicate directly from one computer to up to four embroidery machines at one time and watch the stitch out of each design on the computer monitor.

Installing the Expert Stitch Manager



- **Close the Communications Driver** for the embroidery software by clicking **Shut Down** in the Communications Driver window.
- Insert **Expert Stitch Manager CD** in the CD drive.
- Click **Start**, double click **My Computer** and the CD drive containing the **Expert Stitch Manager**.
- On the CD locate and open the **Expert users manual.pdf**, which requires Acrobat Reader to open. If you don't have Acrobat Reader it is a free download at www.adobe.com. Open the Expert users manual.pdf and print the eleven-page manual.
- Browse **CD Drive:\Expert\Setup.exe**.
- Run **Setup.exe** and **install** program.

Setting up Embroidery Machine for AISIN Expert Stitch Manager

- Make sure the TOYOTA ESP9000 is turned **OFF**.
- Locate and remove the switch cover on the right side of the control panel. There will be two banks of DIP switches DSW1 and DSW2.
- In the **DSW2** bank, flip the **#8** switch to the right in the **ON** position.
- Turn **ON** the TOYOTA ESP9000.
- Press **SET**.
- The LCD screen will read "===" instead of "***" at the top of the control panel.
- Shut down the Standard Communication Driver, if open.
- **Start** The Expert Stitch Manager.
- On the menu bar click on **Setting**. From the drop down menu select **Port**.
- Click on **Scan Ports**.
- If everything is set correctly you will see TOYOTA ESP9000 on COM1.
- The speed setting (Baud Rate) may be changed but it must also be changed on the embroidery machine. To change the setting on the embroidery machine, select the **FUNCTION** menu, arrow down to **B. COM SPEED** and use the left or right **ARROWS** to select the desired speed.

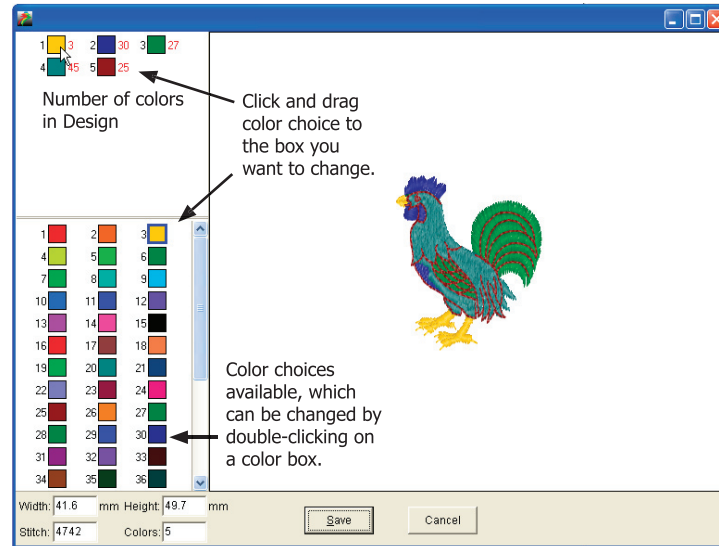


Using the Expert Stitch Manager software


- Open the program if it isn't already. Either double click on the **Expert Stitch Manager**  icon on your desktop or open the Designer Series software and click on the **Prepare For Expert Stitch Manager**  icon on the toolbar.
- Click on the **Folder** tab.
Locate and click on the folder that contains the design file you want to work with.
- Click on the **Stitch File** tab.
This section shows a thumbnail of all designs in the folder, selected from the **Folder** tab.

Setting Design Colors

- Double click on the design you want to set the colors for. A new window appears and in the upper left hand corner there will be the boxes indicating the number of color in the design.
- When you click on one of these colors, the associated color will flash on the design so you will know where it is located.
- On the lower left hand side are some color choices. Click on the color of choice and drag it to the upper left hand box to change the color.
- Go through all the color sequences and when done click **Save**.
- If you want to set a custom color, double click on the color you wish to change. The standard Microsoft Windows – **Color** window will open. Click on **Define Custom Color**. The window will expand. Select the color and click on **Add to Custom Colors**. (Note: Remember the custom color settings, you need this information in the next step)



Setting Thread Colors (that are on the machine)

- Click on the **Send** tab.
- Double click on the Embroidery Machine icon. 
- Double click on the needles to select the color.
- If you set a Custom Color, refer to the previous section.

Transmitting the Design

- From the **Stitch File** tab, click and drag the design into the layout window.
- Click on **Send** tab.
- Click and drag the design into the box to the left of the **embroidery machine** icon.
- Click on the **arrow** to send it to the machine. (You will hear a beep when the transmission has started, and one when the design has been sent)

Sewing the Design

- Verify the color matching, if needed change needles using the **COLOR** button on the ESP9000 control panel.
- **TRACE** the design to ensure it fits in the hoop.
- Press **START**

Stitch Sequence for Multiple Designs

- From the **Stitch Files** tab, click and drag multiple designs into the layout window.
- To change the sequence, click on the **Stitch Sequence** tab. Click and drag the design you wish to sew first into the top position.
- Follow steps for **Transmitting the Design**.



Disk Reader

Designs can be transferred from the PC to a 3 1/2" floppy disk and loaded into the embroidery machine through the disk reader.

- Turn **OFF** machine.
- Plug the Disk Reader cable in the FDD connection port located next to the Serial connector on the back of the embroidery machine. *(see diagram on page 3)*
- To save the design for floppy, in the embroidery software choose **Save As**. In the **Save In** box select the **3 1/2 Floppy [A:]**, enter the **file name** and save the file type as **Tajima [* .dst]**, click on **Save**. Take the floppy disk and load it into the disk reader.
- Turn **ON** machine.
- Press the **START POINT** key. Press the **DATA** key.
- Press the right **ARROW** key to select **335** and then press **SET**.
- Use the up/down **ARROW** keys to select the design. Press **SET**.